



PROFARMA STABLE LINING



**Profarma
Stable Lining**





PSL

PROFARMA STABLE LINING

Profarma has developed a range of recycled and molded stable linings of the highest quality. For those who want to make a conscious and climate-smart choice and at the same time increase comfort for your horses. Profarma Stable Lining offers comfort and cushioning for all parts of your stable environment.

Profarma Stable Lining includes stable products for both indoor and outdoor environments and has been designed with care for the environment, animals and people.

Profarma Stable Lining combines the following properties:

- Soft and comfortable
- Damping properties
- Good grip
- Prevents injuries to the horses
- Customizable, can be tailored to your conditions
- Sound absorbing
- Weight distributing and gentle on underlying surface
- Recycled material
- Low operating and maintenance costs
- System solution based on Profarma's tile

In addition to its cushioning properties, Profarma Stable Lining can replace/reduce the need for consumables such as bedding in the stable environment



BOXFLOOR LINING

A stable lining from Profarma fits all horses. With a stable lining, the comfort of your animals in the stable increases and the load on the joints is reduced. It becomes easier to clean out and keep clean, which saves both time and effort. The lining offers a soft bed to stand and lie on.

For installation, tiles are placed in the box and placed edge to edge against all sides of the box. It can easily be cut to fit the conditions and size of the stable box. It is used together with bedding to absorb moisture from faeces and urine so that cleaning out can be done quick and easy. The proportion of bedding used on top of Profarma's tiles is depending on the individual in the box.

At installation, Profarma recommends that the boxfloor is primed with Stalosan F or similar hygiene powder.

The stable tile is available in different thicknesses depending on the cushioning wanted on the floor. The tile is available in two designs to choose from - one with a smooth top or one with a cross pattern. In addition, it is available in different colors.

Profarma's stable tile 40mm soft is a softer tile that allows extra cushioning and offers an even, soft surface.

Maintenance: You should wash the carpets 2-3 times a year for high hygiene and life span.

Sigtunabygden Ryttaförening (equestrian association), Anna Edin, have been using Profarmas stable tiles about 2 months:

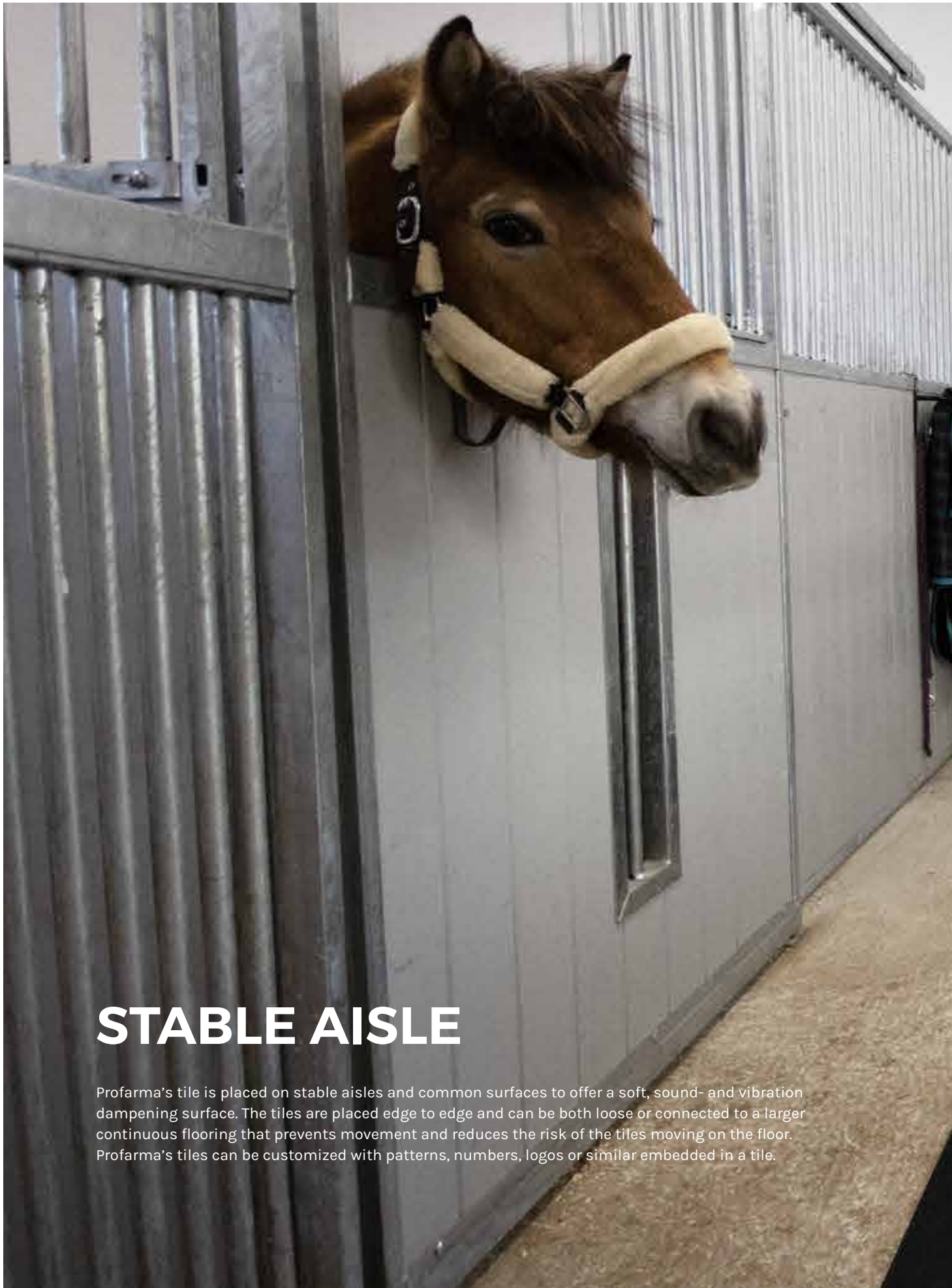
*Profarma's boxfloor lining has been used in two stable boxes and outdoor boxes. In the stable boxes, it has been possible to reduce the use of bedding with 2 bales of shavings and 3 bags of stable pellets per month and horse.**

These horses have always had problems with fur chafing from the underlay in the past, but after Profarma's box tiles were put in, it is completely gone. In the outdoor boxes, it has been observed that the horses lie down more than before after Profarma's box tiles were laid out.

*Approx 45 EUR/horse and month (Profarmas note)

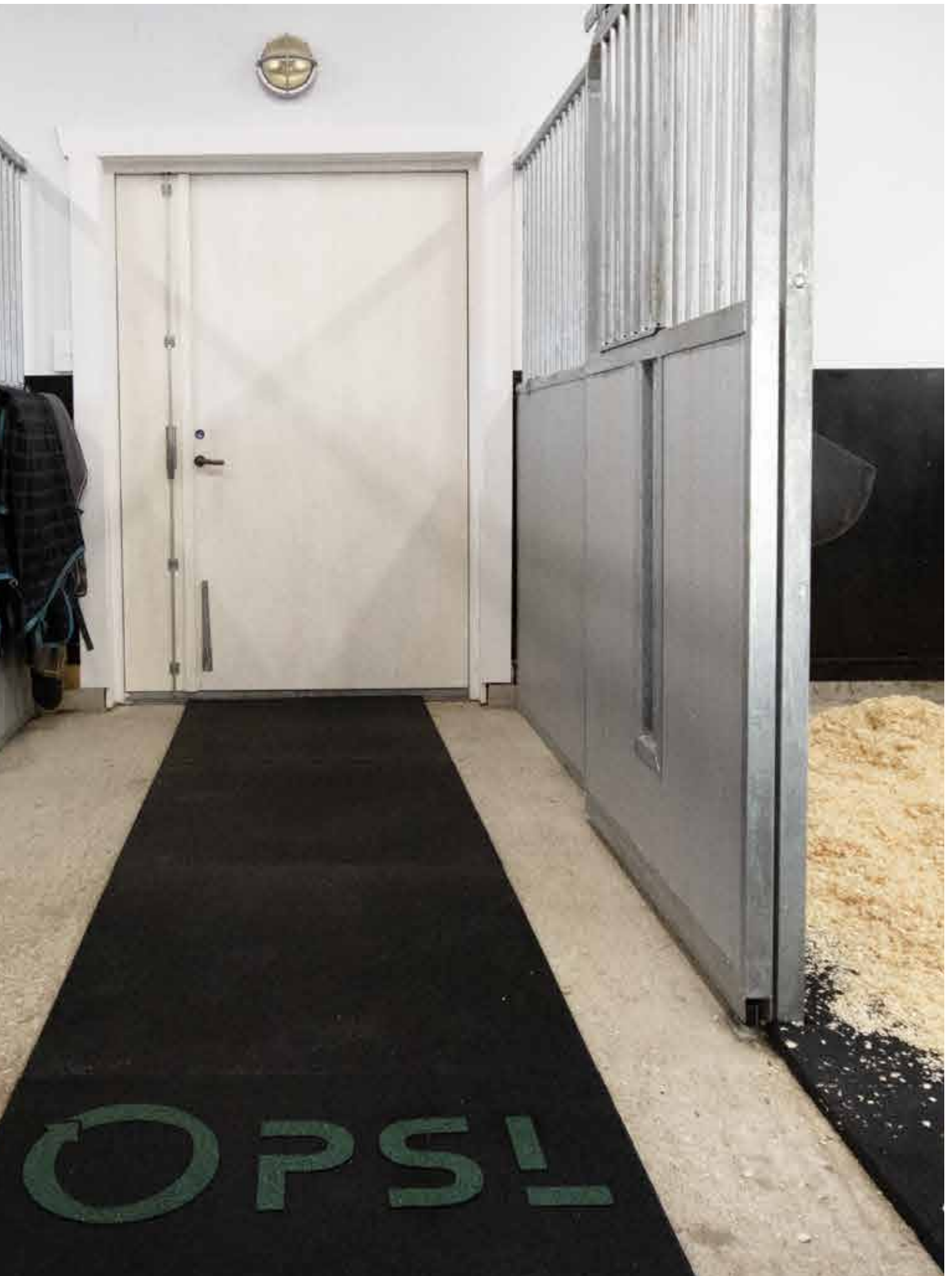


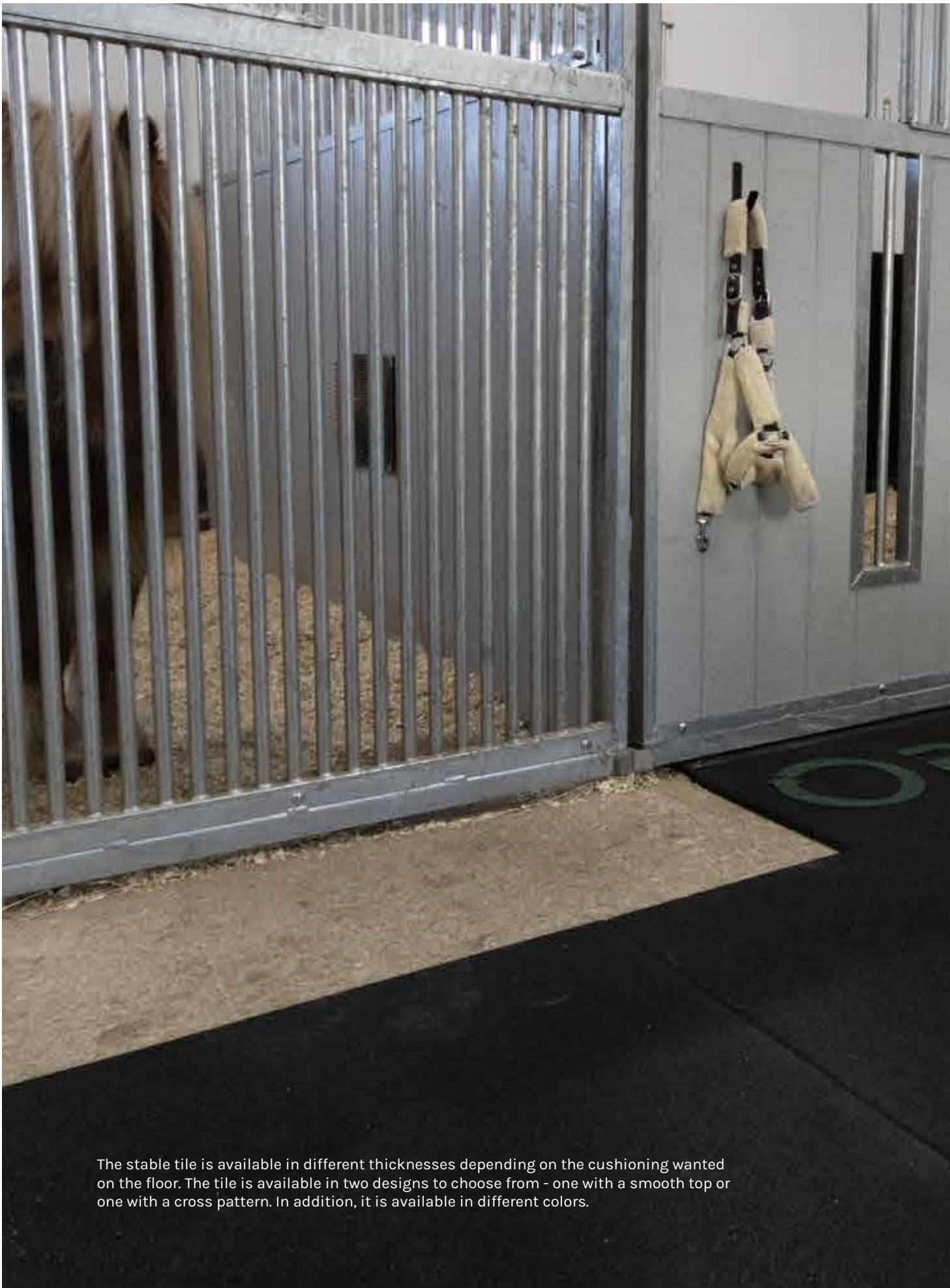




STABLE AISLE

Profarma's tile is placed on stable aisles and common surfaces to offer a soft, sound- and vibration dampening surface. The tiles are placed edge to edge and can be both loose or connected to a larger continuous flooring that prevents movement and reduces the risk of the tiles moving on the floor. Profarma's tiles can be customized with patterns, numbers, logos or similar embedded in a tile.





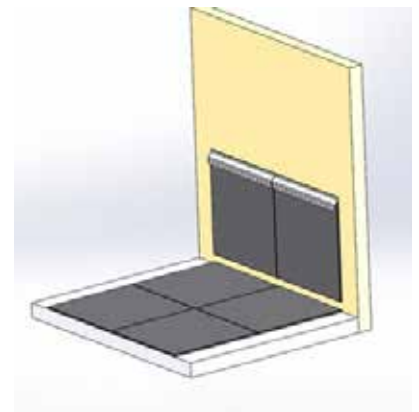
The stable tile is available in different thicknesses depending on the cushioning wanted on the floor. The tile is available in two designs to choose from - one with a smooth top or one with a cross pattern. In addition, it is available in different colors.



WALL LINING

Profarma's stable tile can be used for vertical installation. It is fixed on walls to offer a protective and cushioning surface for your horse in a box or stable environment. The tile is placed either in direct assembly against the wall, or spaced out to get a more sound-absorbing effect.

The wall mounting system is available in two designs:
 Standard - for fixating the tiles on the wall.
 Exclusive - with built in function of accessorie attachment.



OUTDOORS

Profarma's tile is suitable both indoors and outdoors, all year round. It can be used in aisles, yards and other surfaces where the cushioning properties of the tile are beneficial for both the horse and the surrounding environment.



FEEDING STATION

For paddocks and/or burdened surfaces, Profarma Perforated tile is recommended. The carpet allows a higher passage of surface water at the same time as it distributes load/pressure on the ground underneath. This means that there will be less ground damage and reduced accumulation of water. This in turn means less mud and the horses get a better environment to stay in.

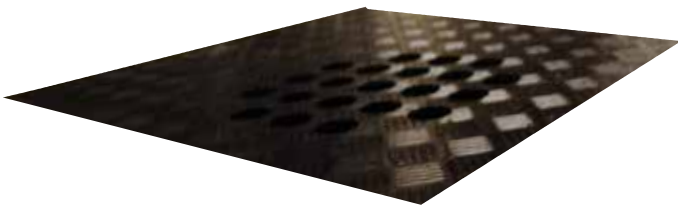
Profarma Perforated tile is recommended around feeding- and water stations which are heavily exposed surfaces in paddocks. They also fit in the parts of the paddock that have a higher wear - such as entry and exit gates, paths or surfaces with higher soil moisture.



SHOWER STALL

For surfaces with a higher wear, Profarma's tile can be surface-reinforced with a waterproof nitrile top in order to be able to direct water runoff towards a drain. The nitrile top is oil-resistant and easy to clean, which makes it suitable for both shower stalls and other exposed places. For best water management, the tiles are connected and the joints are sealed.

To complement the shower stall and control runoff, holes can be made in the tiles, matching existing drains. In this way you get a tailor-made solution for each location and local conditions.



ACCESSORIES

- Concrete nail
- Ground nail
- Tile Connection
- Wall system 1000mm
- Wall system Exclusive 1000mm
- Chamfered edge





PROFARMA STABLE LINING



EcoRub AB

Hökmark 114
SE-932 93 Lövånger, Sweden
Phone: +46 913-247 80
E-mail: info@ecorub.se
Website: www.ecorub.se

